

626143

AMENDMENT TO
DECLARATION OF CONDOMINIUM
OF
RIVER RUN A, A CONDOMINIUM
6100 RIVER RUN DRIVE
SEBASTIAN, FLORIDA 32958

82 DEC 11 PM 1:04

EYL. *Rever* P.C.

THIS AMENDMENT, made this 5th day of December, 1989 by River Run Development, Inc., a Florida corporation (formerly known as Muller Enterprises, Inc., a Florida corporation), hereinafter called "Developer", for themselves, their successors and assigns;

WHEREAS, Developer recorded in the Public Records of Indian River County, Florida, that certain Declaration of Condominium of RIVER RUN A, a Condominium, said Declaration being dated August 29, 1989 and recorded in Official Record Book 841, Page 805, Public Records of Indian River County, Florida and;

WHEREAS, Paragraph 3B of said Declaration provides that the same may be amended;

NOW THEREFORE, the Declaration of Condominium of RIVER RUN A, a Condominium, is hereby amended in the following respects:

- 1. Exhibit D is hereby amended to add As-Built plans for Units 5950; 5952 & 5954; 5956 & 5958; 5960 & 5962; 5964.

In all other respects, the Declaration of Condominium is to remain as filed.

IN WITNESS WHEREOF, the Developer and Declarer, RIVER RUN DEVELOPMENT, INC., a Florida corporation, has executed this Amendment to the Declaration of Condominium of RIVER RUN A, a Condominium, on the day and year first above written.

Signed, sealed and delivered
in the presence of:

RIVER RUN DEVELOPMENT, INC.,
a Florida corporation



Sandra Carpenter
Witness

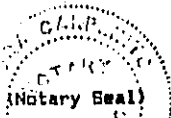
By: *Henry J. Muller*
Henry J. Muller, President

[Signature]
Witness

STATE OF FLORIDA
COUNTY OF INDIAN RIVER

I HEREBY CERTIFY that on this day, before me, an officer duly authorized in the State and County aforesaid to take acknowledgments, personally appeared Henry J. Muller, well known to me to be the President of RIVER RUN DEVELOPMENT, INC., and he acknowledged executing the foregoing instrument freely and voluntarily under authority duly vested in him by said corporation and that the seal affixed thereto is the true corporate seal of said corporation.

WITNESS my hand and official seal in the State and County last aforesaid this 5th day of December, 1989.



Sandra Carpenter
Notary Public
My Commission Expires

NOTARY PUBLIC, STATE OF FLORIDA
MY COMMISSION EXPIRES: NOV. 1, 1991.
BUNGE & THRU NOTARY PUBLIC UNDERWRITERS.

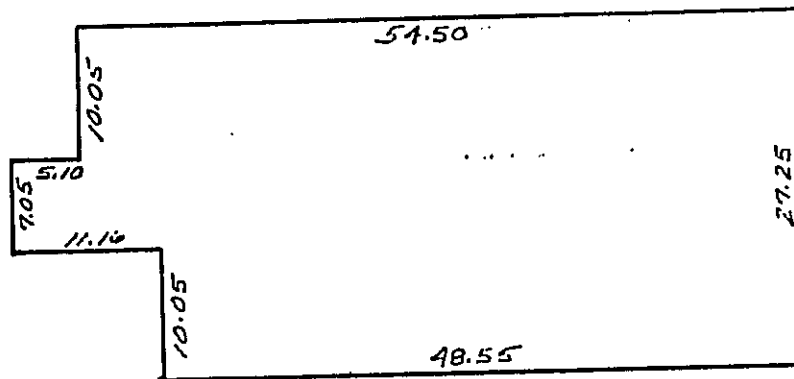
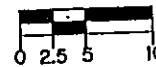
This instrument prepared by
River Run Development, Inc.
65 Royal Palm Blvd., Suite A
Vero Beach, FL 32960

NOTES:

1. These plans and dimensions have been compiled from plans prepared by Charles Harrison Pawley-Architect, and are supplemented by field surveys and measurements as deemed necessary by Masteller, Moler & Reed, Inc.
2. "Unit Boundary" is as defined by the declaration of condominium.
3. Common elements such as, but not limited to, conduits, wires, outlets, utility lines, ducts, plumbing, lighting, ect., have not been graphically illustrated.
4. Interior partitioning as part of the units is not shown.



SCALE: 1" = 10'



RIVER RUN A
AS-BUILT UNIT BOUNDARY PLANS
UNIT 5950
EXHIBIT "D" 7a



MASTELLER, MOLER & REED INC.

PROFESSIONAL LAND SURVEYORS
POST OFFICE BOX 1045
SEBASTIAN, FLORIDA 32958

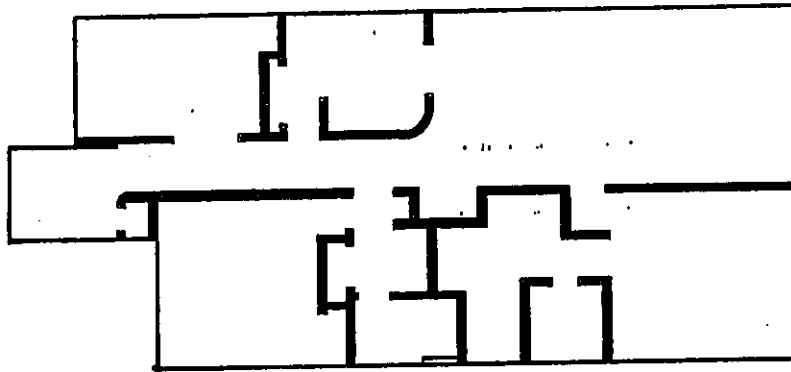
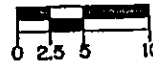
Rod Reed R.L.S.
Registered Land Surveyor #3916
State of Florida

NOTES:

1. These plans and dimensions have been compiled from plans prepared by Charles Harrison Pawley-Architect, and are supplemented by field surveys and measurements as deemed necessary by Masteller, Moler & Reed, Inc.
2. "Unit Boundary" is as defined by the declaration of condominium.
3. Common elements such as, but not limited to, conduits, wires, outlets, utility lines, ducts, plumbing, lighting, ect., have not been graphically illustrated.



SCALE: 1" = 10'



RIVER RUN A
AS-BUILT UNIT INTERIOR PLANS
UNIT "B"
EXHIBIT "D" 7b



MASTELLER, MOLER & REED INC.

PROFESSIONAL LAND SURVEYORS
POST OFFICE BOX 1045
SEBASTIAN, FLORIDA 32958

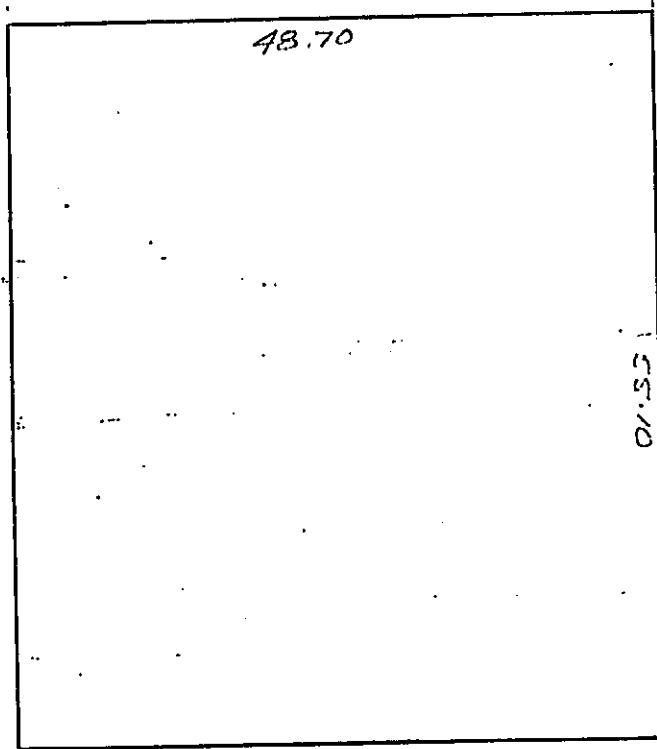
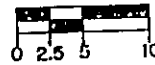
Rod Reed R.L.S.
Registered Land Surveyor #3916
State of Florida

NOTES:

1. These plans and dimensions have been compiled from plans prepared by Charles Harrison Pawley-Architect, and are supplemented by field surveys and measurements as deemed necessary by Masteller, Moler & Reed, Inc.
2. "Unit Boundary" is as defined by the declaration of condominium.
3. Common elements such as, but not limited to, conduits, wires, outlets, utility lines, ducts, plumbing, lighting, ect., have not been graphically illustrated.
4. Interior partitioning as part of the units is not shown.



SCALE: 1" = 10'



RIVER RUN A
AS-BUILT UNIT BOUNDARY PLANS
UNIT - 5952 & 5954
EXHIBIT "D"-7a



MASTELLER, MOLER & REED, INC.

PROFESSIONAL LAND SURVEYORS
POST OFFICE BOX 1048
SEBASTIAN, FLORIDA 32958

Rod Reed R.L.S.
Registered Land Surveyor #3916
State of Florida

PHONE 589-4810

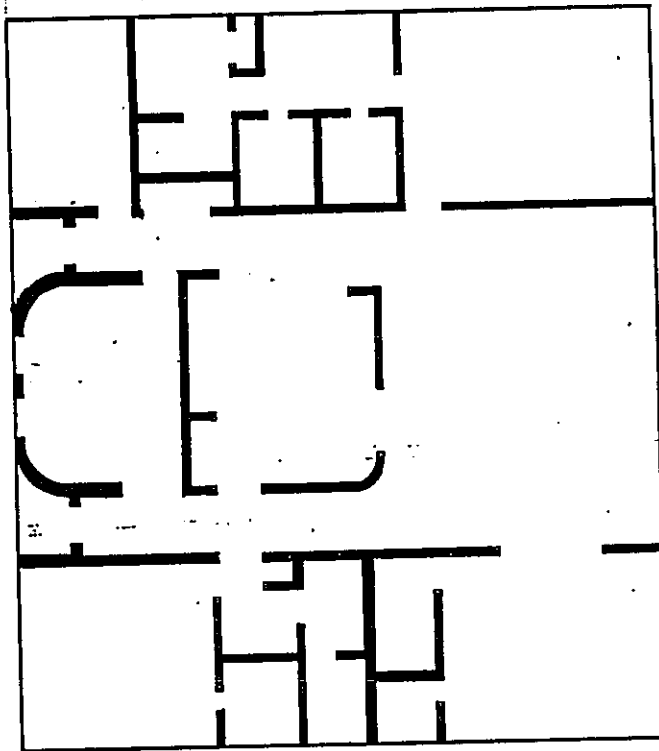
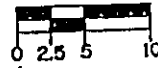
O.R. 850 PG 0212

NOTES:

1. These plans and dimensions have been compiled from plans prepared by Charles Harrison Pawley-Architect, and are supplemented by field surveys and measurements as deemed necessary by Masteller, Moler & Reed, Inc.
2. "Unit Boundary" is as defined by the declaration of condominium.
3. Common elements such as, but not limited to, conduits, wires, outlets, utility lines, ducts, plumbing, lighting, ect., have not been graphically illustrated.



SCALE: 1" = 10'



RIVER RUN A
AS-BUILT UNIT INTERIOR PLANS
UNIT - PENTHOUSE
EXHIBIT "D"-7b



MASTELLER, MOLER & REED, INC.

PROFESSIONAL LAND SURVEYORS
POST OFFICE BOX 1048
SEBASTIAN, FLORIDA 32958

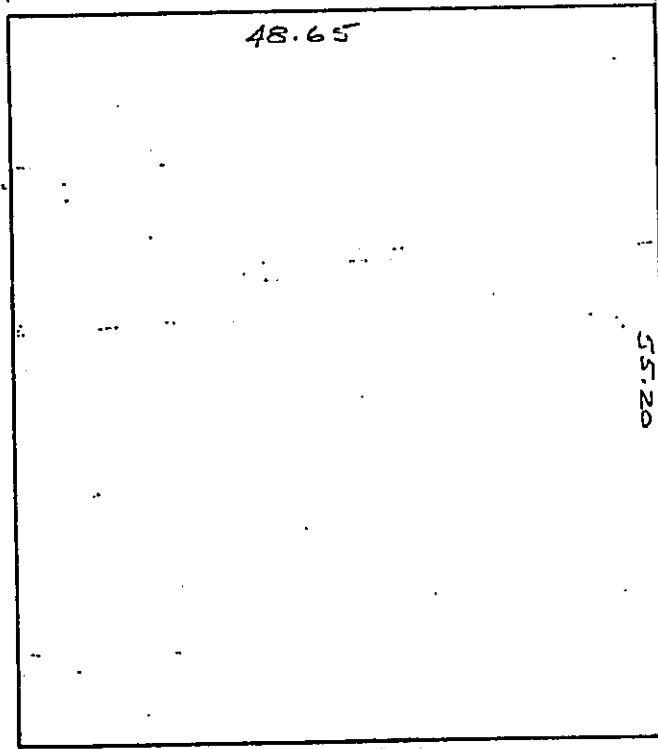
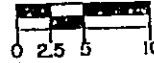
Rod Reed R.L.S.
Registered Land Surveyor #3916
State of Florida

NOTES:

1. These plans and dimensions have been compiled from plans prepared by Charles Harrison Pawley-Architect, and are supplemented by field surveys and measurements as deemed necessary by Masteller, Moler & Reed, Inc.
2. "Unit Boundary" is as defined by the declaration of condominium.
3. Common elements such as, but not limited to, conduits, wires, outlets, utility lines, ducts, plumbing, lighting, ect., have not been graphically illustrated.
4. Interior partitioning as part of the units is not shown.



SCALE: 1" = 10'



RIVER RUN A
AS-BUILT UNIT BOUNDARY PLANS
UNIT - 5956 & 5958
EXHIBIT "D"-7a



MASTELLER, MOLER & REED, INC.

PROFESSIONAL LAND SURVEYORS
POST OFFICE BOX 1048
SEBASTIAN, FLORIDA 32968

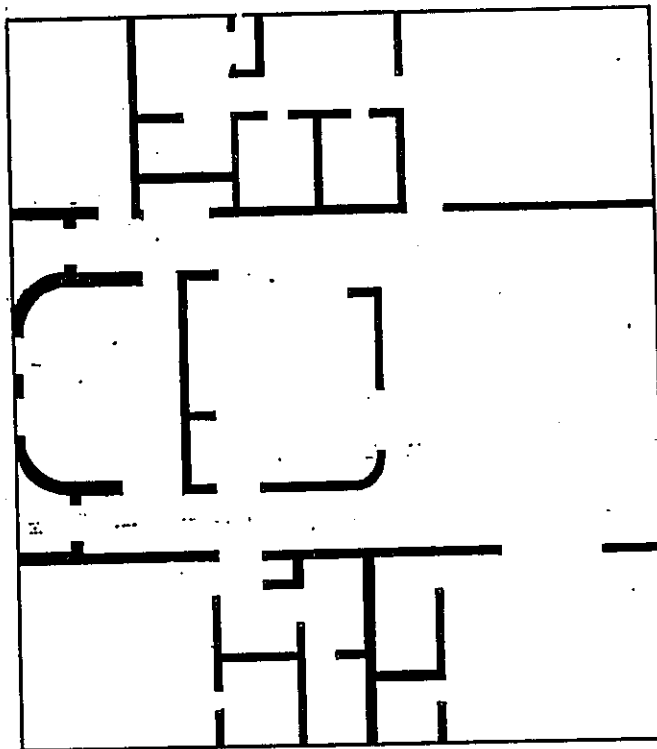
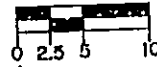
Rod Reed R.L.S.
Registered Land Surveyor #3916
State of Florida

NOTES:

1. These plans and dimensions have been compiled from plans prepared by Charles Harrison Pawley-Architect, and are supplemented by field surveys and measurements as deemed necessary by Masteller, Moler & Reed, Inc.
2. "Unit Boundary" is as defined by the declaration of condominium.
3. Common elements such as, but not limited to, conduits, wires, outlets, utility lines, ducts, plumbing, lighting, ect., have not been graphically illustrated.



SCALE: 1" = 10'



RIVER RUN A
AS-BUILT UNIT INTERIOR PLANS
UNIT - PENTHOUSE
EXHIBIT "D"-7b



MASTELLER, MOLER & REED, INC.

PROFESSIONAL LAND SURVEYORS
POST OFFICE BOX 1048
SEBASTIAN, FLORIDA 32968

Rod Reed R.L.S.
Registered Land Surveyor #3916
State of Florida

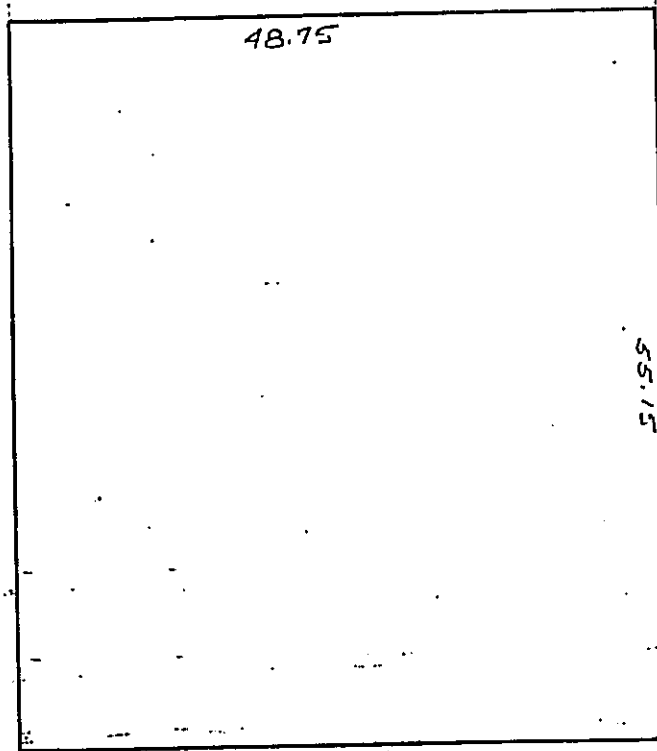
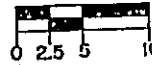
NOTES:

1. These plans and dimensions have been compiled from plans prepared by Charles Harrison Pawley-Architect, and are supplemented by field surveys and measurements as deemed necessary by Masteller, Moler & Reed, Inc.
2. "Unit Boundary" is as defined by the declaration of condominium.
3. Common elements such as, but not limited to, conduits, wires, outlets, utility lines, ducts, plumbing, lighting, ect., have not been graphically illustrated.
4. Interior partitioning as part of the units is not shown.

N



SCALE: 1" = 10'



RIVER RUN A
AS-BUILT UNIT BOUNDARY PLANS
UNIT - 5960 & 5962
EXHIBIT "D"-7a



MASTELLER, MOLER & REED, INC.

PROFESSIONAL LAND SURVEYORS
POST OFFICE BOX 1045
SEBASTIAN, FLORIDA 32958

RK 11070

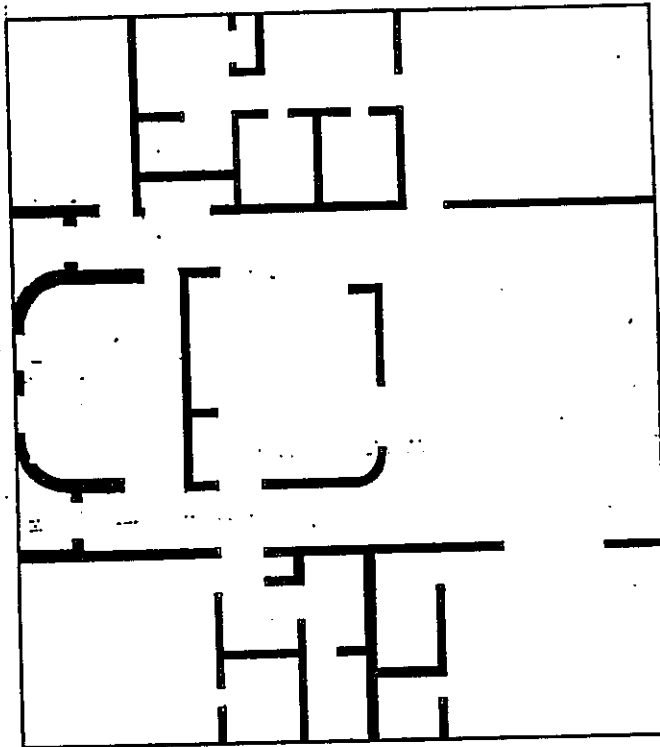
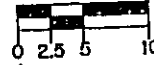
Rod Reed R.L.S.
Registered Land Surveyor #3916
State of Florida

NOTES:

1. These plans and dimensions have been compiled from plans prepared by Charles Harrison Pawley-Architect, and are supplemented by field surveys and measurements as deemed necessary by Masteller, Moler & Reed, Inc.
2. "Unit Boundary" is as defined by the declaration of condominium.
3. Common elements such as, but not limited to, conduits, wires, outlets, utility lines, ducts, plumbing, lighting, ect., have not been graphically illustrated.



SCALE: 1" = 10'



RIVER RUN A
AS-BUILT UNIT INTERIOR PLANS
UNIT - PENTHOUSE
EXHIBIT "D"-7b



MASTELLER, MOLER & REED, INC.

PROFESSIONAL LAND SURVEYORS
POST OFFICE BOX 1048
SEBASTIAN, FLORIDA 32958

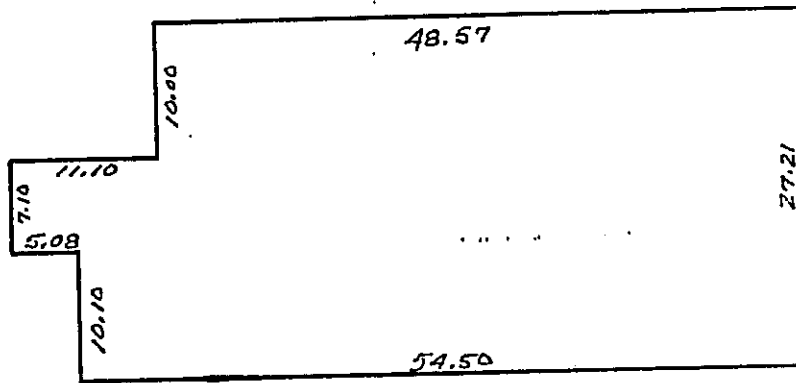
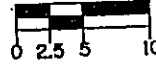
Rod Reed R.L.S.
Registered Land Surveyor #3916
State of Florida

NOTES:

1. These plans and dimensions have been compiled from plans prepared by Charles Harrison Fawley-Architect, and are supplemented by field surveys and measurements as deemed necessary by Masteller, Moler & Reed, Inc.
2. "Unit Boundary" is as defined by the declaration of condominium.
3. Common elements such as, but not limited to, conduits, wires, outlets, utility lines, ducts, plumbing, lighting, ect., have not been graphically illustrated.
4. Interior partitioning as part of the units is not shown.



SCALE: 1" = 10'



RIVER RUN A
AS-BUILT UNIT BOUNDARY PLANS
UNIT 5964
EXHIBIT "D" 7a



MASTELLER, MOLER & REED INC.

PROFESSIONAL LAND SURVEYORS
POST OFFICE BOX 1048
SEBASTIAN, FLORIDA 32958

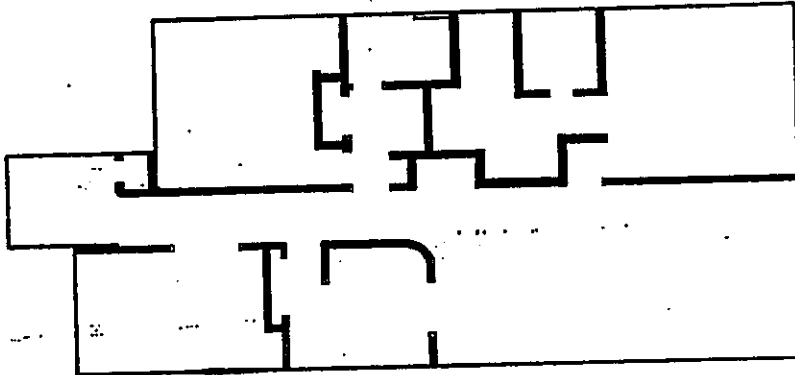
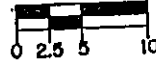
Rod Reed R.L.S.
Registered Land Surveyor #3916
State of Florida

NOTES:

1. These plans and dimensions have been compiled from plans prepared by Charles Harrison Pawley-Architect, and are supplemented by field surveys and measurements as deemed necessary by Masteller, Moler & Reed, Inc.
2. "Unit Boundary" is as defined by the declaration of condominium.
3. Common elements such as, but not limited to, conduits, wires, outlets, utility lines, ducts, plumbing, lighting, ect., have not been graphically illustrated.



SCALE: 1" = 10'



RIVER RUN A
AS-BUILT UNIT INTERIOR PLANS
UNIT "B" REVERSE
EXHIBIT "D" 7b



MASTELLER, MOLER & REED INC.

PROFESSIONAL LAND SURVEYORS
POST OFFICE BOX 1045
SEBASTIAN, FLORIDA 32968

Rod Reed R.L.S.
Registered Land Surveyor #3916
State of Florida

623523

AMENDMENT TO
DECLARATION OF CONDOMINIUM
OF
RIVER RUN A, A CONDOMINIUM
6100 RIVER RUN DRIVE
SEBASTIAN, FLORIDA 32958

THIS AMENDMENT, made this 6th day of November, 1987 by River Run Development, Inc., a Florida corporation (formerly known as Muller Enterprises, Inc., a Florida corporation), hereinafter called "Developer", for themselves, their successors and assigns;

WHEREAS, Developer recorded in the Public Records of Indian River County, Florida, that certain Declaration of Condominium of RIVER RUN A, a Condominium, said Declaration being dated August 29, 1987 and recorded in Official Record Book 841, Page 805, Public Records of Indian River County, Florida and;

WHEREAS, Paragraph 38 of said Declaration provides that the same may be amended;

NOW THEREFORE, the Declaration of Condominium of RIVER RUN A, a Condominium, is hereby amended in the following respect:

1. As-Built Plans for Units 5934, 5936, 5938, 5940, 5942, 5944, 5946, and 5948 as hereby added to Exhibit "D".

In all other respects, the Declaration of Condominium is to remain as filed.

IN WITNESS WHEREOF, the Developer and Declarer, RIVER RUN DEVELOPMENT, INC., a Florida corporation, has executed this Amendment to the Declaration of Condominium of RIVER RUN A, a Condominium, on the day and year first above written.

Signed, sealed and delivered
in the presence of:

RIVER RUN DEVELOPMENT, INC.,
a Florida corporation

Sandra Carpenter
Witness

By: Henry J. Muller
Henry J. Muller, President

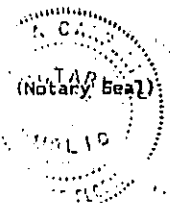
[Signature]
Witness



STATE OF FLORIDA
COUNTY OF INDIAN RIVER

I HEREBY CERTIFY that on this day, before me, an officer duly authorized in the State and County aforesaid to take acknowledgments, personally appeared Henry J. Muller, well known to me to be the President of RIVER RUN DEVELOPMENT, INC., and he acknowledged executing the foregoing instrument freely and voluntarily under authority duly vested in him by said corporation and that the seal affixed thereto is the true corporate seal of said corporation.

WITNESS my hand and official seal in the State and County last aforesaid this 6th day of November, 1987.



Sandra Carpenter
Notary Public
My Commission Expires:

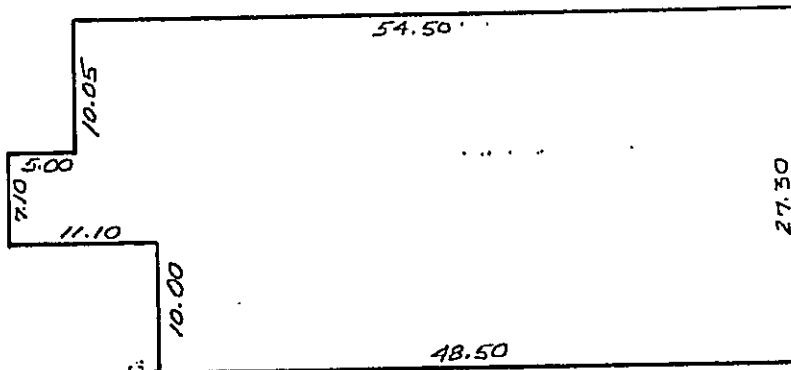
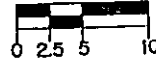
NOTARY PUBLIC, STATE OF FLORIDA.
MY COMMISSION EXPIRES: NOV. 1, 1991.
BONDED THIRD NOTARY PUBLIC UNDERWRITERS.

NOTES:

1. These plans and dimensions have been compiled from plans prepared by Charles Harrison Pawley-Architect, and are supplemented by field surveys and measurements as deemed necessary by Masteller, Molar & Reed, Inc.
2. "Unit Boundary" is as defined by the declaration of condominium.
3. Common elements such as, but not limited to, conduits, wires, outlets, utility lines, ducts, plumbing, lighting, ect., have not been graphically illustrated.
4. Interior partitioning as part of the units is not shown.



SCALE: 1" = 10'



89 NOV 16 PM 11:31

89 NOV 16 PM 11:31

BY *[Signature]* D.C.

BY *[Signature]* D.C.

RIVER RUN A
AS-BUILT UNIT BOUNDARY PLANS
UNIT 5934
EXHIBIT "D" 7a



MASTELLER, MOLAR & REED INC.

PROFESSIONAL LAND SURVEYORS
POST OFFICE BOX 1048
SEBASTIAN, FLORIDA 32958

[Signature] 11/17/89

Rod Reed R.L.S.
Registered Land Surveyor #3916
State of Florida

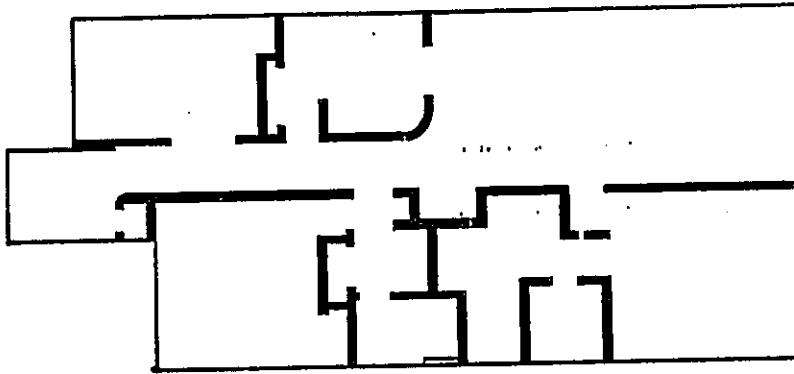
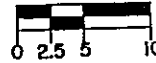
PHONE 589-4810

NOTES:

1. These plans and dimensions have been compiled from plans prepared by Charles Harrison Pawley-Architect, and are supplemented by field surveys and measurements as deemed necessary by Masteller, Moler & Reed, Inc.
2. "Unit Boundary" is as defined by the declaration of condominium.
3. Common elements such as, but not limited to, conduits, wires, outlets, utility lines, ducts, plumbing, lighting, ect., have not been graphically illustrated.



SCALE: 1" = 10'



RIVER RUN A
AS-BUILT UNIT INTERIOR PLANS
UNIT - "B"

EXHIBIT "D" 7b



MASTELLER, MOLER & REED INC.

PROFESSIONAL LAND SURVEYORS
POST OFFICE BOX 1048
SEBASTIAN, FLORIDA 32958

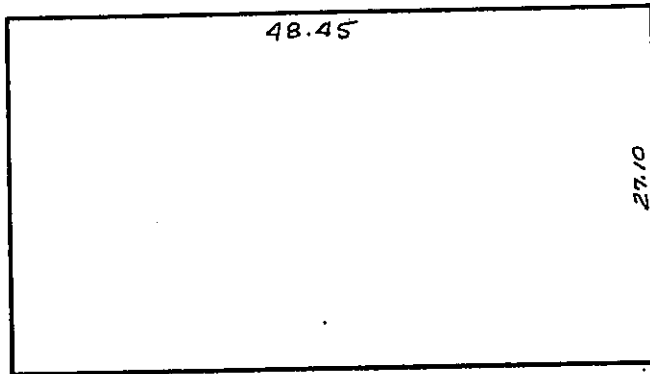
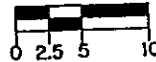

Rod Reed R.L.S.
Registered Land Surveyor #3916
State of Florida

NOTES:

1. These plans and dimensions have been compiled from plans prepared by Charles Harrison Pawley-Architect, and are supplemented by field surveys and measurements as deemed necessary by Masteller, Moler & Reed, Inc.
2. "Unit Boundary" is as defined by the declaration of condominium.
3. Common elements such as, but not limited to, conduits, wires, outlets, utility lines, ducts, plumbing, lighting, ect., have not been graphically illustrated.
4. Interior partitioning as part of the units is not shown.



SCALE: 1" = 10'



RIVER RUN A
AS-BUILT UNIT BOUNDARY PLANS
UNIT 5936
EXHIBIT "D" 7a



MASTELLER, MOLER & REED, INC.

PROFESSIONAL LAND SURVEYORS
POST OFFICE BOX 1045
SEBASTIAN, FLORIDA 32958

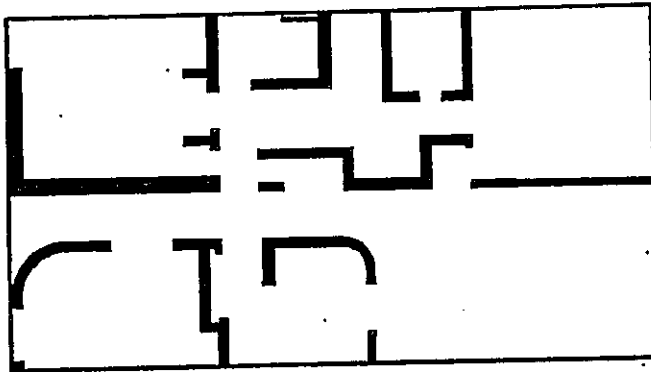
Rod Reed R.L.S.
Registered Land Surveyor #3916
State of Florida

NOTES:

1. These plans and dimensions have been compiled from plans prepared by Charles Harrison Pawley-Architect, and are supplemented by field surveys and measurements as deemed necessary by Masteller, Moler & Reed, Inc.
2. "Unit Boundary" is as defined by the declaration of condominium.
3. Common elements such as, but not limited to, conduits, wires, outlets, utility lines, ducts, plumbing, lighting, ect., have not been graphically illustrated.



SCALE: 1" = 10'



RIVER RUN A
AS-BUILT UNIT INTERIOR PLANS
UNIT - "A"
EXHIBIT "D" 7b



MASTELLER, MOLER & REED, INC.

PROFESSIONAL LAND SURVEYORS
POST OFFICE BOX 1045
SEBASTIAN, FLORIDA 32958

RR 110311
Rod Reed R.L.S.,
Registered Land Surveyor #3916
State of Florida

PHONE 589-4810

O.R. 848 PG 0749

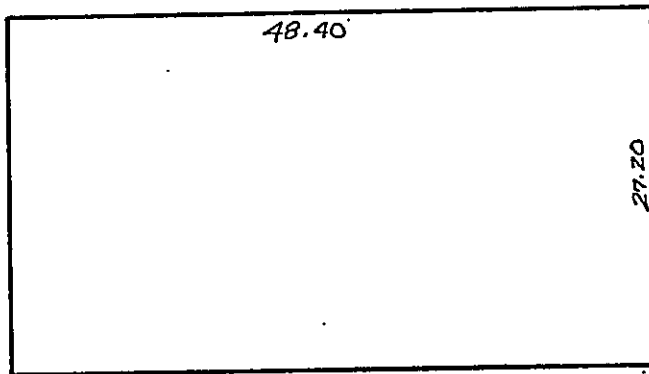
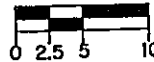
NOTES:

1. These plans and dimensions have been compiled from plans prepared by Charles Harrison Pawley-Architect, and are supplemented by field surveys and measurements as deemed necessary by Masteller, Moler & Reed, Inc.
2. "Unit Boundary" is as defined by the declaration of condominium.
3. Common elements such as, but not limited to, conduits, wires, outlets, utility lines, ducts, plumbing, lighting, ect., have not been graphically illustrated.
4. Interior partitioning as part of the units is not shown.

N



SCALE: 1" = 10'



RIVER RUN A
AS-BUILT UNIT BOUNDARY PLANS
UNIT 5938

EXHIBIT "D" 7a



MASTELLER, MOLER & REED, INC.

PROFESSIONAL LAND SURVEYORS
POST OFFICE BOX 1045
SEBASTIAN, FLORIDA 32965

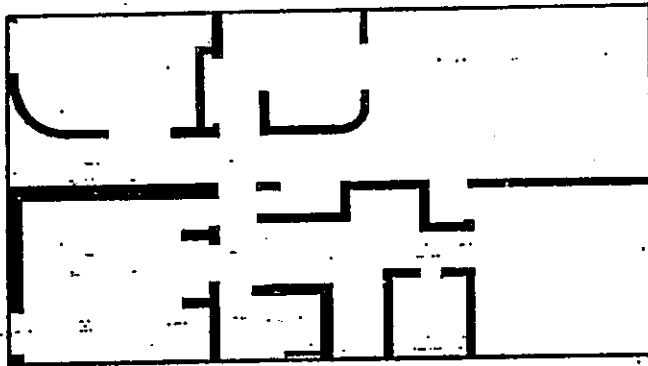
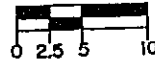
Rod Reed R.L.S.
Registered Land Surveyor #3916
State of Florida

NOTES:

1. These plans and dimensions have been compiled from plans prepared by Charles Harrison Fawley-Architect, and are supplemented by field surveys and measurements as deemed necessary by Masteller, Moler & Reed, Inc.
2. "Unit Boundary" is as defined by the declaration of condominium.
3. Common elements such as, but not limited to, conduits, wires, outlets, utility lines, ducts, plumbing, lighting, ect., have not been graphically illustrated.



SCALE: 1" = 10'



RIVER RUN A
AS-BUILT UNIT INTERIOR PLANS
UNIT-"A" REVERSE
EXHIBIT "D" 7b



MASTELLER, MOLER & REED, INC.

PROFESSIONAL LAND SURVEYORS
POST OFFICE BOX 1048
SEBASTIAN, FLORIDA 32968

RR 112711
Rod Reed R.L.S.
Registered Land Surveyor #3916
State of Florida

PHONE 689-4810

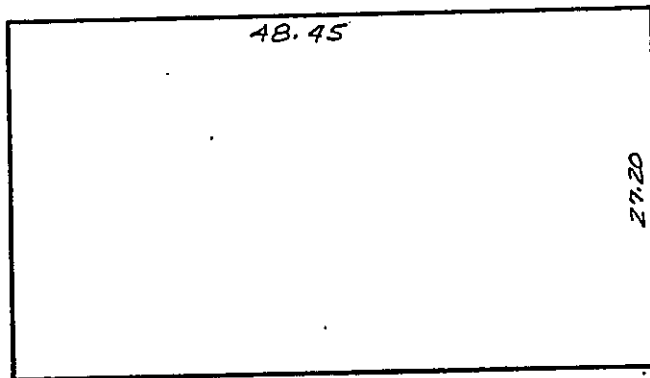
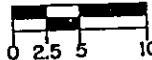
O.R. 848 PG 0751

NOTES:

1. These plans and dimensions have been compiled from plans prepared by Charles Harrison Pawley-Architect, and are supplemented by field surveys and measurements as deemed necessary by Masteller, Moler & Reed, Inc.
2. "Unit Boundary" is as defined by the declaration of condominium.
3. Common elements such as, but not limited to, conduits, wires, outlets, utility lines, ducts, plumbing, lighting, ect., have not been graphically illustrated.
4. Interior partitioning as part of the units is not shown.



SCALE : 1" = 10'



RIVER RUN A
AS-BUILT UNIT BOUNDARY PLANS
UNIT 5940
EXHIBIT "D" 7a



MASTELLER, MOLER & REED, INC.

PROFESSIONAL LAND SURVEYORS
POST OFFICE BOX 1046
SEBASTIAN, FLORIDA 32958

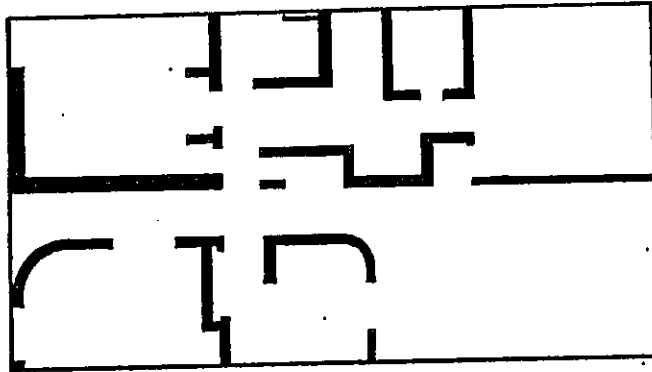
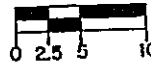
Rod Reed R.L.S.
Registered Land Surveyor #3916
State of Florida

NOTES:

1. These plans and dimensions have been compiled from plans prepared by Charles Harrison Pawley-Architect, and are supplemented by field surveys and measurements as deemed necessary by Masteller, Moler & Reed, Inc.
2. "Unit Boundary" is as defined by the declaration of condominium.
3. Common elements such as, but not limited to, conduits, wires, outlets, utility lines, ducts, plumbing, lighting, ect., have not been graphically illustrated.



SCALE: 1" = 10'



RIVER RUN A
AS-BUILT UNIT INTERIOR PLANS
UNIT - "A"
EXHIBIT "D" 7b



MASTELLER, MOLER & REED, INC.

PROFESSIONAL LAND SURVEYORS
POST OFFICE BOX 1048
SEBASTIAN, FLORIDA 32958

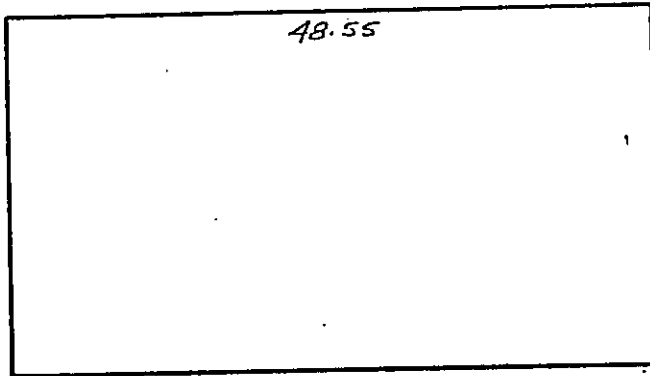
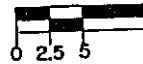
Rod Reed
Rod Reed R.L.S.
Registered Land Surveyor #3916
State of Florida

NOTES:

1. These plans and dimensions have been compiled from plans prepared by Charles Harrison Pawley-Architect, and are supplemented by field surveys and measurements as deemed necessary by Masteller, Moler & Reed, Inc.
2. "Unit Boundary" is as defined by the declaration of condominium.
3. Common elements such as, but not limited to, conduits, wires, outlets, utility lines, ducts, plumbing, lighting, ect., have not been graphically illustrated.
4. Interior partitioning as part of the units is not shown.



SCALE: 1" = 10'



RIVER RUN A
AS-BUILT UNIT BOUNDARY PLANS
UNIT 5942
EXHIBIT "D" 7a



MASTELLER, MOLER & REED, INC.

PROFESSIONAL LAND SURVEYORS
POST OFFICE BOX 1046
SEBASTIAN, FLORIDA 32958

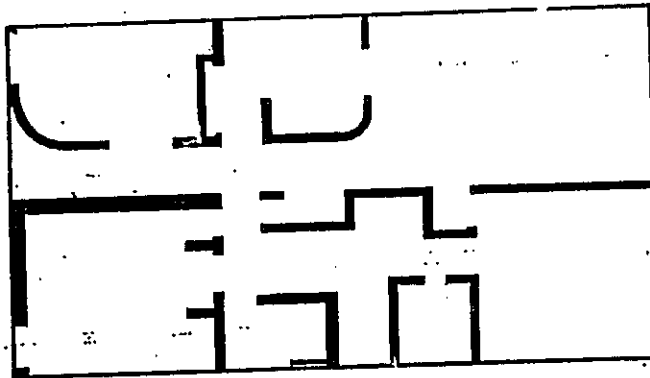
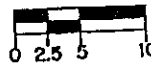
Rod Reed R.L.S.
Registered Land Surveyor #3916
State of Florida

NOTES:

1. These plans and dimensions have been compiled from plans prepared by Charles Harrison Pawley-Architect, and are supplemented by field surveys and measurements as deemed necessary by Masteller, Moler & Reed, Inc.
2. "Unit Boundary" is as defined by the declaration of condominium.
3. Common elements such as, but not limited to, conduits, wires, outlets, utility lines, ducts, plumbing, lighting, ect., have not been graphically illustrated.



SCALE: 1" = 10'



RIVER RUN A
AS-BUILT UNIT... PLANS
UNIT-"A" REVERSE
EXHIBIT "



MASTELLER, MOLER & REED, INC.

PROFESSIONAL LAND SURVEYORS
POST OFFICE BOX 1048
SEBASTIAN, FLORIDA 32958

RR 11/27/11

Rod Reed R.L.S.
Registered Land Surveyor #3916
State of Florida

PHONE 588-4810

O.R. 848 PG 0755

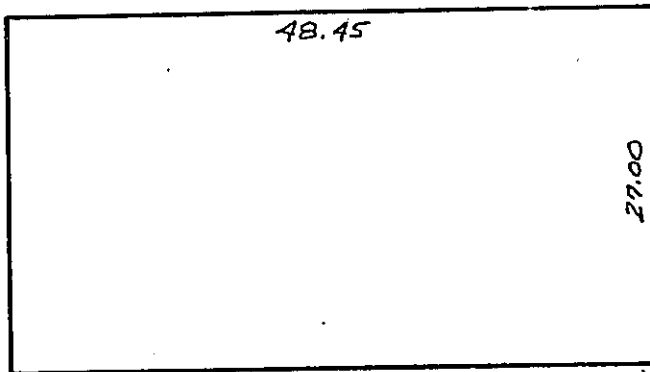
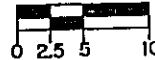
NOTES:

1. These plans and dimensions have been compiled from plans prepared by Charles Harrison Pawley-Architect, and are supplemented by field surveys and measurements as deemed necessary by Masteller, Moler & Reed, Inc.
2. "Unit Boundary" is as defined by the declaration of condominium.
3. Common elements such as, but not limited to, conduits, wires, outlets, utility lines, ducts, plumbing, lighting, ect., have not been graphically illustrated.
4. Interior partitioning as part of the units is not shown.

N



SCALE: 1" = 10'



RIVER RUN A
AS-BUILT UNIT BOUNDARY PLANS
UNIT 5944
EXHIBIT "D" 7a



MASTELLER, MOLER & REED, INC.

PROFESSIONAL LAND SURVEYORS
POST OFFICE BOX 1048
SEBASTIAN, FLORIDA 32958

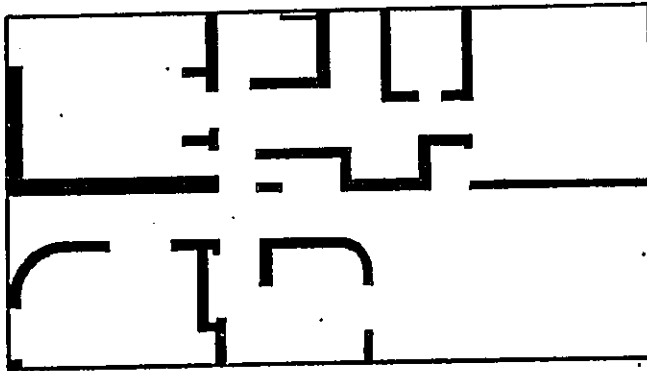
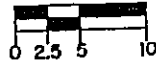
R. Reed
Rod Reed R.L.S.
Registered Land Surveyor #3916
State of Florida

NOTES:

1. These plans and dimensions have been compiled from plans prepared by Charles Harrison Pawley-Architect, and are supplemented by field surveys and measurements as deemed necessary by Masteller, Moler & Reed, Inc.
2. "Unit Boundary" is as defined by the declaration of condominium.
3. Common elements such as, but not limited to, conduits, wires, outlets, utility lines, ducts, plumbing, lighting, ect., have not been graphically illustrated.



SCALE: 1" = 10'



RIVER RUN A
AS-BUILT UNIT INTERIOR PLANS
UNIT - "A"
EXHIBIT "D" 7b



MASTELLER, MOLER & REED, INC.

PROFESSIONAL LAND SURVEYORS
POST OFFICE BOX 1048
SEBASTIAN, FLORIDA 32958

589-4810

Rod Reed R.L.S.
Registered Land Surveyor #3916
State of Florida

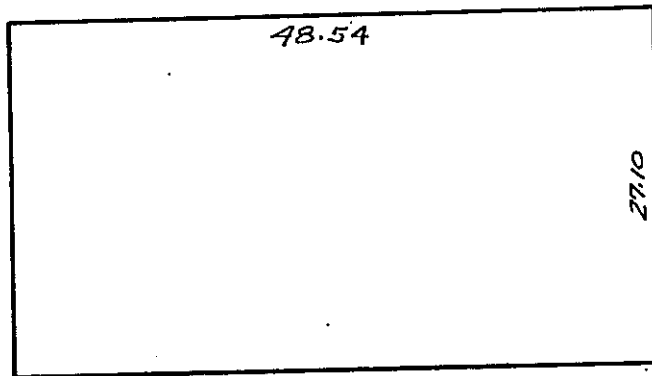
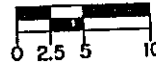
O.R. 848 PG 0757

NOTES:

1. These plans and dimensions have been compiled from plans prepared by Charles Harrison Pawley-Architect, and are supplemented by field surveys and measurements as deemed necessary by Masteller, Moler & Reed, Inc.
2. "Unit Boundary" is as defined by the declaration of condominium.
3. Common elements such as, but not limited to, conduits, wires, outlets, utility lines, ducts, plumbing, lighting, ect., have not been graphically illustrated.
4. Interior partitioning as part of the units is not shown.



SCALE: 1" = 10'



RIVER RUN A
AS-BUILT UNIT BOUNDARY PLANS
UNIT 5946
EXHIBIT "D" 7a



MASTELLER, MOLER & REED, INC.

PROFESSIONAL LAND SURVEYORS
POST OFFICE BOX 1045
SEBASTIAN, FLORIDA 32958

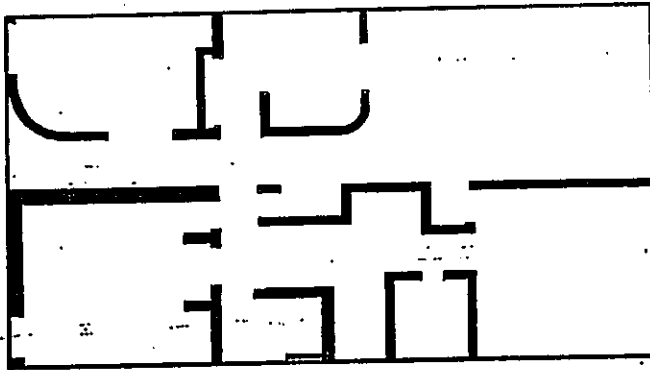
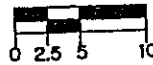
Rod Reed R.L.S.
Registered Land Surveyor #3916
State of Florida

NOTES:

1. These plans and dimensions have been compiled from plans prepared by Charles Harrison Pawley-Architect, and are supplemented by field surveys and measurements as deemed necessary by Masteller, Moler & Reed, Inc.
2. "Unit Boundary" is as defined by the declaration of condominium.
3. Common elements such as, but not limited to, conduits, wires, outlets, utility lines, ducts, plumbing, lighting, ect., have not been graphically illustrated.



SCALE: 1" = 10'



RIVER RUN A
AS-BUILT UNIT INTERIOR PLANS
UNIT-"A" REVERSE
EXHIBIT "D" 7b



MASTELLER, MOLER & REED, INC.

PROFESSIONAL LAND SURVEYORS
POST OFFICE BOX 1048
SEBASTIAN, FLORIDA 32968

Rod Reed
11-27-71

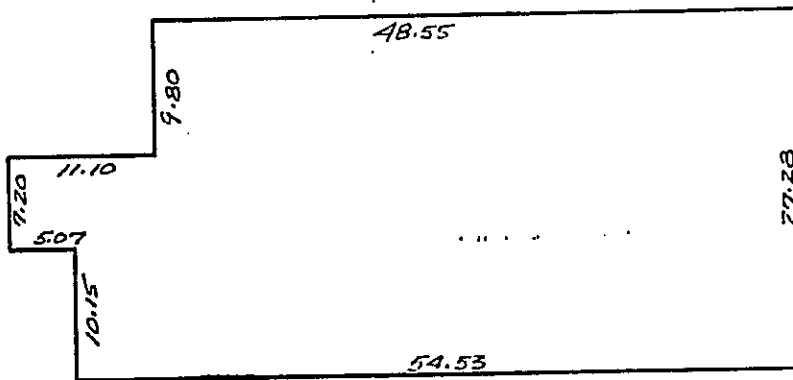
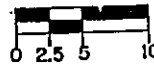
Rod Reed R.L.S.
Registered Land Surveyor #3916
State of Florida

NOTES:

1. These plans and dimensions have been compiled from plans prepared by Charles Harrison Pawley-Architect, and are supplemented by field surveys and measurements as deemed necessary by Masteller, Moler & Reed, Inc.
2. "Unit Boundary" is as defined by the declaration of condominium.
3. Common elements such as, but not limited to, conduits, wires, outlets, utility lines, ducts, plumbing, lighting, ect., have not been graphically illustrated.
4. Interior partitioning as part of the units is not shown.



SCALE: 1" = 10'



RIVER RUN A
AS-BUILT UNIT BOUNDARY PLANS
UNIT 5948
EXHIBIT "D" 7a



MASTELLER, MOLER & REED INC.

PROFESSIONAL LAND SURVEYORS
POST OFFICE BOX 1045
SEBASTIAN, FLORIDA 32958

RR

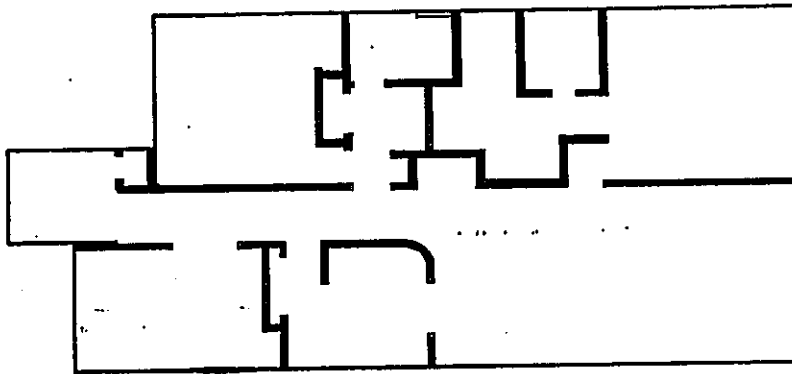
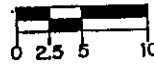
Rod Reed R.L.S.
Registered Land Surveyor #3916
State of Florida

NOTES:

1. These plans and dimensions have been compiled from plans prepared by Charles Harrison Pawley-Architect, and are supplemented by field surveys and measurements as deemed necessary by Masteller, Moler & Reed, Inc.
2. "Unit Boundary" is as defined by the declaration of condominium.
3. Common elements such as, but not limited to, conduits, wires, outlets, utility lines, ducts, plumbing, lighting, ect., have not been graphically illustrated.



SCALE: 1" = 10'



RIVER RUN A
AS-BUILT UNIT INTERIOR PLANS
UNIT-"B" REVERSE
EXHIBIT "D" 7b



MASTELLER, MOLER & REED INC.

PROFESSIONAL LAND SURVEYORS
POST OFFICE BOX 1040
SEBASTIAN, FLORIDA 32958

Rod Reed
Rod Reed R.L.S.
Registered Land Surveyor #3916
State of Florida